

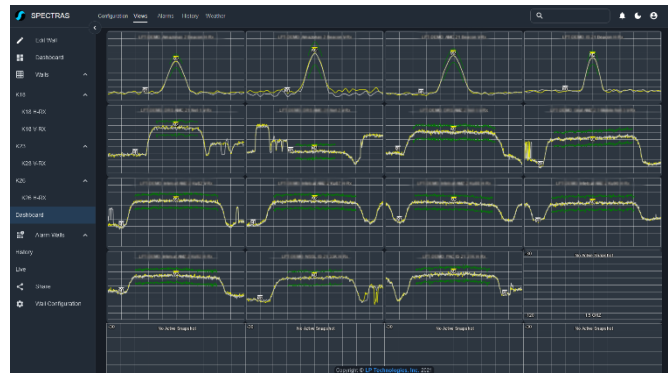
# SPECTRAS-GEO:

## Revolutionizing Unattended Spectrum Monitoring

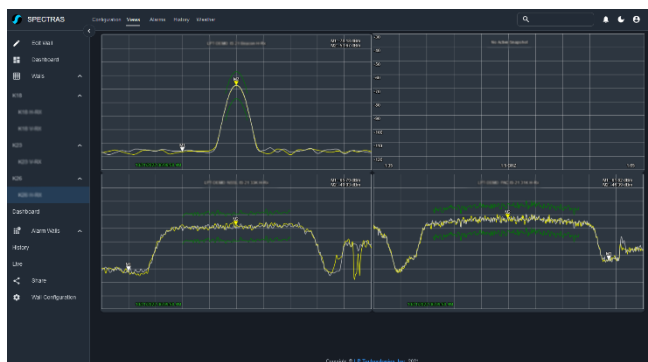


### Sophisticated Automated Spectrum Analysis and Troubleshooting Platform

Embark on a new era of automated spectrum monitoring with Spectras-GEO, a state-of-the-art software designed exclusively for automatic (unattended) spectrum monitoring. Specializing in real-time and polling-based monitoring, Spectras-GEO takes a proactive approach to continuously analyze the spectrum environment, ensuring timely identification and resolution of potential issues.



### Advantages of Automated Spectrum Monitoring:



- ✓ Controlled and Targeted Monitoring
- ✓ Reduced Data Overhead
- ✓ Efficient Resource Utilization
- ✓ Real-time Information Retrieval
- ✓ Adaptability to Dynamic Environments
- ✓ Customized Monitoring Plans
- ✓ Lower Power Consumption
- ✓ Selective Data Collection
- ✓ Scalability
- ✓ Improved Security and Privacy)
- ✓ Cost Savings

### Assuming Command with SPECTRAS-GEO

Remain in charge of your spectrum monitoring efforts with Spectras-GEO. This cutting-edge software equips you with the tools to supervise and precisely monitor your spectrum actively. Spectras-GEO offers unparalleled features, allowing you to foresee potential challenges and transform your strategy in automated spectrum monitoring. Leverage the capabilities of Spectras-GEO to navigate the complex landscape of unattended spectrum monitoring, ensuring optimal performance in your RF environment.

### KEY BENEFITS:

1. **Automated Spectrum Monitoring Expertise:** Spectras-GEO is your dedicated solution for automatic (unattended) spectrum monitoring, offering continuous and proactive surveillance of the wireless spectrum. Experience a revolutionary approach to spectrum management.

2. **Collaboration-Driven Display Walls:** Support for unlimited display walls with various trace display modes ensures efficient collaboration in a polling monitoring context. Import, export, and share functionalities facilitate seamless information exchange among monitoring teams.
3. **Comprehensive Dashboard for Unattended Monitoring:** The intuitive dashboard keeps you informed about crucial aspects, including alarm status, recording status, instrument connection status, data metrics, and software information. Tailored for automated, unattended spectrum monitoring.
4. **User Management Excellence:** Spectras-GEO boasts unlimited users with advanced compartmentalization and user level-based permissions. Achieve streamlined access control, including seamless compatibility with Active Directory and LDAP.
5. **Infinite Instrument Connectivity:** Connect an unlimited number of spectrum analyzers and external switch instruments, ensuring flexibility in instrument pairing based on the number of connected devices. The system adapts to the dynamic spectrum landscape effortlessly.
6. **Advanced Tools for Intelligent Monitoring:** Utilize powerful tools, including snapshot modes (toggle between LIVE and POLLING) and alarm reporting in visual, audio, email, SNMP, and API call modes. Benefit from unlimited active alarms per spectrum analyzer, ensuring comprehensive monitoring.

#### **LICENSING OPTIONS:**

The Spectras-GEO license combines the Spectras-Base license and integrates both live and advanced polling-based monitoring features, establishing it as the ultimate solution for automated spectrum monitoring. The Spectras-GEO license is perpetual, allows for multiple simultaneous users and installations, includes free software updates, is tied to a specific instrument, and is non-transferable.

#### **AVAILABLE MODULES FOR ENHANCED SPECTRUM MANAGEMENT:**

1. **Advanced History:** Dive into the historical data to better understand spectrum trends.
2. **NIMBUS (Weather):** Integrate weather data for a holistic view of environmental factors impacting spectrum performance.
3. **LIVE Walls:** Collaborate effectively with real-time display walls for dynamic spectrum analysis.
4. **TimeShare (TS):** Optimize spectrum utilization with time-sharing capabilities for increased efficiency.

#### **ABOUT LP TECHNOLOGIES, INC.**

With over 25 years of expertise, LP Technologies, Inc. is a leader in cutting-edge hardware and software solutions for satellite detection and interference monitoring. Renowned for pioneering advancements in multi-port remote-controlled spectrum analyzers, LPT remains at the forefront through relentless innovation. They focus on simplifying spectrum analyzers, reducing costs, enhancing connectivity, and addressing complexities. Trusted across diverse industries, LPT is the preferred choice for reliable, advanced satellite technology.